

Snap-tite Hose: Polyurethane Lay Flat Hose

Rugged Constructions for Diverse Applications

Snap-tite Hose polyurethane lay flat hose provides compact, durable, lightweight water and multipurpose service in agricultural, construction, general industrial and mining applications. The hose offers superior value due to its robust design, rugged materials, compatibility with multiple media and versatility across many applications.

Traditional PVC lay flat hose incorporates spiral reinforcement sandwiched between stiff layers of PVC, whereas Snap-tite Hose

provides a strong circular woven reinforcement that allows the polyurethane to be extruded through-the-weave, fully encapsulating the textile reinforcement. The strong yet pliable hose wall resists abrasion, cracking, puncturing, and degradation from oil, ozone, petrochemicals, ultraviolet light and weathering. The design and materials promote strong adhesions between the hose components, resulting in exceptional performance and service life.

Snap-tite Hose offers distinct styles for targeted service:

- TE for industrial applications
- AS incorporates dual antistatic wires for grounding a static charge
- IR for irrigation
- PW for potable water
- TS features a thick wall for slurry applications

All (except PW) are offered with optional standard colours for easy identification, and the flexible lay flat construction rolls up for easy handling, transportation and storage.

General Specifications

Hose Construction:	Polyurethane extruded through one woven polyester ply of reinforcement (AS hose contains dual antistatic wires)
Temp range:	-40°C to +80°C (-40°F to +176°F)
Brand Method:	Black or white text
Brand Example:	SNAP-TITE HOSE (PART NUMBER) (DATE CODE) MADE IN IRELAND MAXIMUM WORKING PRESSURE (XXX)
Packaging:	PSI Coils (maximum 100 meters) or flaked in cartons

TE Blue Multipurpose Hose

TE is a standard duty water discharge and transfer hose for general industrial applications.



Size	Nom ID (in)	Reinf Plies	Nom Wall Thickness (in)	Aprox Wt		Max Rec WP*		Min Burst Pressure		Std Pack (meters)
				(lb/m)	(kg/m)	(psi)	(bar)	(psi)	(bar)	
1-1/4"	1-1/4	1	0.085	0.497	0.2254	450	31.0	900	62.1	200
0	1-1/2	1	0.085	0.730	0.331	450	31.0	900	62.1	200
1-3/4"	1-3/4	1	0.090	0.794	0.360	450	31.0	900	62.1	200
2"	2	1	0.090	0.900	0.408	450	31.0	900	62.1	200
2-1/2"	2-1/2	1	0.090	1.279	0.580	450	31.0	900	62.1	200
3"	3	1	0.130	1.656	0.751	350	24.1	700	48.3	200
3-1/2"	3-1/2	1	0.130	2.130	0.966	250	17.2	500	34.5	200
4"	4	1	0.130	2.507	1.137	270	18.6	540	37.2	200
4-1/2"	4-1/2"	1	0.130	2.745	1.245	250	17.2	500	34.5	200
5"	5"	1	0.130	3.124	1.417	250	17.2	500	34.5	200
6"	6"	1	0.120	3.785	1.717	300	20.7	600	41.4	200

*Or rating of coupler, whichever is lower.

For TE hose for Potable Water (PW) service, specify when ordering.

Part Number Example: TE15X200MB
 TE 15 200M B
 Hose ID Length Colour
 (1-1/2") (meters) (Blue)

Optional Standard Colours:

 Black (K) Green (G) NATO Green
 Yellow Red

Part Number Example: TE15X200MBPW
 TE 15 200M B PW
 Hose ID Length Colour (Potable Water)
 (1-1/2") (meters) (Blue) Water)

Optional Standard Colours: None, available in blue only.

PW (Potable Water) Hose is a distinct version of TE hose for potable water service.

PW hose has been fully tested to prove compatibility with potable water, including taste and odour. It is used in mobile applications to transfer large volumes of drinking water from tank trucks to major public events or work sites, as well as emergency water supply lines to bypass water mains where service has been curtailed due to construction. PW hose is much easier to couple, install and remove than polyethylene pipe, and is resistant to petrochemical ingress and resulting water contamination.

PW hose meets the following standards/requirements:

- England, Northern Ireland and Wales: Approved for use in public water supplies per the Secretary of State's List of Approved Products, listing 56/4/62, as published by the Drinking Water Inspectorate (DWI).
- Poland: National Institute of Public Health listing HK/W/0105/01/2009.
- Scotland: Approved by the Scottish Ministers per Water Supply (Water Quality) (Scotland) Regulations 2001, Regulation 27/4.
- UK Private Schemes: Water Regulations Advisory Scheme (WRAS) Approval Number 0710512.
- USA: Meets and exceeds standard NSF 61 for potable water.

IR Blue Multipurpose Hose

IR is a standard slurry hose for water discharge and transfer in agricultural applications.



Size	Nom ID (in)	Reinf Plies	Nom Wall Thickness		Aprox Wt		Max Rec WP*		Min Burst Pressure		Std Pack (meters)
			(mm)	(in)	(lb/m)	(kg/m)	(psi)	(bar)	(psi)	(bar)	
3-1/2"	3-1/2	1	3.3	0.130	2.130	0.966	250	17.2	500	34.5	200
4"	4	1	3.3	0.130	2.507	1.137	250	17.2	500	34.5	200
4-1/2"	4-1/2"	1	3.3	0.130	2.745	1.245	250	17.2	500	34.5	200
5"	5"	1	3.3	0.130	3.124	1.417	250	17.2	500	34.5	200
6"	6"	1	3.04	0.120	3.785	1.717	300	20.7	600	41.4	200

Part Number Example: IR35X200MG

*Or rating of coupler, whichever is lower.

IR 35 200M G
Hose ID Length Colour
(Slurry) (3-1/2") (meters) (Green)

Optional Standard Colours:



TS Slurry Hose

TS is a heavy duty slurry discharge and transfer hose. The hose construction features a thick wall for additional abrasion resistance and durability in rugged slurry transfer applications.



Size	Nom ID (in)	Reinf Plies	Nom Wall Thickness		Aprox Wt		Max Rec WP*		Min Burst Pressure		Std Pack (meters)
			(mm)	(in)	(lb/m)	(kg/m)	(psi)	(bar)	(psi)	(bar)	
3-1/2"	3-1/2	1	3.82	0.150	2.035	0.923	350	24.1	700	48.3	200
4"	4	1	3.82	0.150	2.934	1.331	250	17.2	500	34.5	200
4-1/2"	4-1/2"	1	3.82	0.150	3.124	1.417	250	17.2	500	34.5	200
5"	5"	1	3.82	0.150	3.503	1.589	250	17.2	500	34.5	200
6"	6"	1	3.82	0.150	4.023	1.825	300	20.7	600	41.4	200

Part Number Example: TS30X200MN

*Or rating of coupler, whichever is lower.

TS 30 200M N
Hose ID Length Colour
(Slurry) (3") (meters) (Brown)

Optional Standard Colours:



TSX Heavy Duty Slurry Hose

TSX is a heavy duty slurry discharge and transfer hose. The hose construction features a thick wall for additional abrasion resistance and durability in rugged slurry transfer applications.



Size	Nom ID (in)	Reinf Plies	Nom Wall Thickness		Aprox Wt		Min Burst Pressure		STD Pack (meters)
			(mm)	(in)	(lb)	(kg)	(psi)	(bar)	
4.5"	4.5"	1	5.08	0.200	1.34	0.608	500	34.5	200
5"	5"	1	5.08	0.200	1.42	0.644	500	34.5	200
5-1/2"	5-1/2"	1	5.08	0.200	1.50	0.680	500	34.5	200
6"	6"	1	5.59	0.220	1.90	0.862	900	62.1	200
7"	7"	1	5.34	0.210	2.15	0.975	750	51.7	200
7-1/4"	7-1/4"	1	5.34	0.210	2.20	0.998	750	51.7	200

Part Number Example: TSX30X200MN

*Or rating of coupler, whichever is lower.

TSX 30 200M N
Hose ID Length Colour
(Slurry) (3") (meters) (Brown)

Optional Standard Colours:



Longitudinal Strength of Snap-Tite Hose

NOMINAL Size		Designed Strength		Not to Exceed	
Inches	MM	Lbs	KG	Lbs	KG
3-1/2"	89.5	22900	10400	8015	3640
4"	104.5	29300	13300	10255	4655
4-1/2"	113.5	34100	15500	11935	5425
5"	127	39000	17700	13650	6195
6"	154	43800	19900	15330	6965

Test: Many longitudinal strength tests on finished products have been conducted and compared to single warp yarn strength multiplied by the number of ends in a product. Actual results are 50% to 65% of the "Designed Longitudinal Strength" due to the factors mentioned above.

Safety Factor: To retain a positive margin of safety, the actual load a hose is subjected to must not exceed 35% of the "Designed Longitudinal Strength". The chart above lists hose types and their "Designed Longitudinal Strength" as well as a listing of the maximum Longitudinal Load that must not be exceeded.

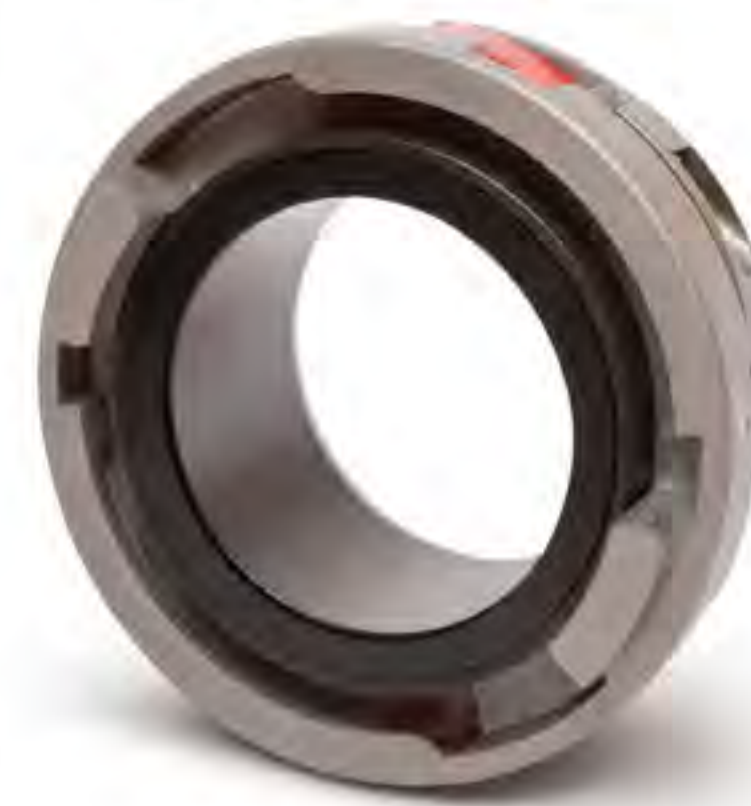
Couplings

HY-FLOW DOUBLE BOLT



Specializing in field attachable fittings and accessories for umbilical manure slurry applications, U.S. Coupling has become the recognized market leader for large diameter supply hose and drag hose fittings and accessories for the demanding umbilical manure slurry market.

STORZ



Lightweight cast aluminum, hard-coated to prevent corrosion and abrasion. Self-locking, 3-part clamp design ensures better coupling retention and reduces hang-up when laying hose in the field.

Chemical Resistance Guide for TE & IR Hose

Key: G = Good • F = Fair • C = Conditional • X = Not Recommended

Chemical	Resistance	Chemical	Resistance	Chemical	Resistance
Acetone	X	Ethyl Ether	C	Phosphoric Acid (Crude)	X
Ammonium Hydroxide	X	Ethylene Dichloride	X	Phosphoric Acid 45%	X
Amyl Acetate	C	Freon 113	G	Potassium Hydroxide	C
Benzene	X	Fuel Oil	F	Propyl Alcohol	C
Benzyl Alcohol	X	Fuel Oil Acid	C	Sodium Chloride	F
Butyl Acetate	G	Gasoline (Sour or refined)	G	Sodium Hydroxide (Caustic Soda)	C
Butyl Alcohol	G	Glue	G	Sodium Nitrate	G
Butyl Stearate	F	Grease	G	Sodium Phosphate	X
Calcium Chloride	G	Hydrochloric Acid (Hot) 37%	X	Sodium Silicate	G
Calcium Nitrate	G	Hydrochloric Acid (Cold) 37%	X	Sulphuric Acid 10%	C
Carbon Tetrachloride	X	Hydrogen Gas	G	Sulphuric Acid 11-75%	C
Chlorobenzene	X	Hydrogen Peroxide 90%	C	Sulphuric Acid 76-95%	C
Chloroform	X	Hydrogen Peroxide 3%	G	Toluene (Toluol)	X
Cresols	X	Kerosene	G	Trichloroethylene	C
Chlorox	C	Methyl Alcohol	C	Tricresyl Phosphate	X
Detergents (Non-hydrocarbon)	G	Methyl Ethyl Ketone (MEK)	X	Vegetable Oils	G
Diacetone Alcohol	X	Mineral Oil	G	Water, Fresh	G
Diesel Oil	G	Naphtha	F	Water, Sea	G
Diethylene Glycol, cold	G	Nitric Acid	X	Zinc Chloride, Dry	G
Ethyl Alcohol, (Ethanol) cold	G	Petroleum, Crude	G	Zinc Sulphate, Dry	G
		Phenol (Carbolic Acid)	C		

WARNING! The above data is based on testing and believed to be reliable; however, the information should be used ONLY as a guide, since it does not take into consideration all variables, such as elevated temperatures, fluid contamination, concentration, etc., that may be encountered in actual use. All critical applications should be tested. Contact Snap-tite Hose for additional chemical compatibility information.

NOTE: For TE hose for Potable Water (PW) service, specify when ordering.